



southern uplands partnership
living land, living community

SUP NEWSLETTER

December updates...

Welcome to our December newsletter featuring the latest Southern Uplands Partnership updates!

We hope you are enjoying the wintery scenes of our beautiful Southern Uplands and are staying cosy and well.



Keeping in touch



www.sup.org.uk



[southernuplandspartnership](https://www.facebook.com/southernuplandspartnership)



[southernupland1](https://twitter.com/southernupland1)



[southernuplandspartnership](https://www.instagram.com/southernuplandspartnership)

South West Scotland Coastal Way

KATRINA DICK

Project Officer Katrina is moving along apace with our vision for this coastal path, linking Cumbria to Ayrshire.

Access improvement works are starting in Gretna, Dornock, Glencaple, and Sandyhills to Kippford. Surveying westwards has now reached Rascarrel, so watch this space in the new year for more path improvement works!



Left: Katrina, out with Ed and George from the Dalbeattie Forest Community Partnership exploring options for improving the accessible paths in the forest, right: view from the path at Rockcliffe

Give Katrina a shout at katrina@sup.org.uk if you want to discuss the coastal path near you!

[South West Scotland Coastal Way web page](#)



South West Scotland Environmental Information Centre

[HTTPS://SWSEIC.ORG.UK/](https://swseic.org.uk/)

As well as all of their other activity, including recording wildlife and showing others how to at community events, SWSEIC has also been busy updating the Dumfries & Galloway website. The website has been developed to aid recorders by providing the current known distribution of species in D&G, identification of moths and to provide information about their ecology. Read more at the blog on the SWSEIC website [here](#).

03.003 (6/18)
Map-winged Swift
Korscheltellus fusconebulosa

1536 record(s) from 73 local(s)

Last Recorded: 2022, 2022, 2022

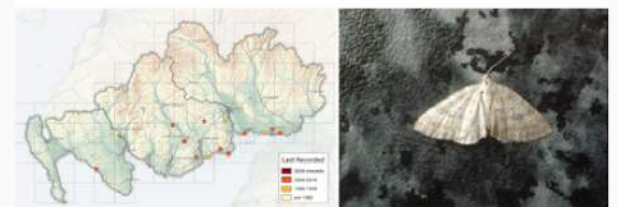
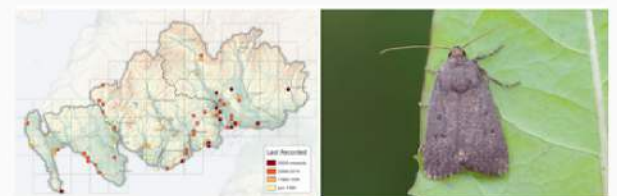
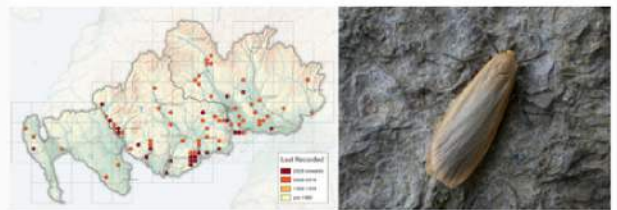
Phenology: % of records vs. Month (J, F, M, A, M, J, J, A, S, O, N, D)

Last Recorded: 2020 onwards, 2016-2019, 1960-1959, pre-1960

Identification: The distinctive map-like markings on the forewing are very characteristic. The Map-winged Swift has no proboscis, so it is never found at sugar or flowers. Records of both sexes and forms required.

Life cycle: One generation. Overwinters as a larva, but probably taking two seasons for development.

Larval foodplants: Larvae feed on the roots of bracken, as well as other herbaceous plants.



A big thank you to all of our recorders, volunteers and current and past moth verifiers without whose records and help the update of DG Moths Website and these maps would not have been possible.

[Sign up to the SWSEIC newsletter here](#) to keep in touch with future plans!

Follow at: [SWSEIC Facebook](#)

Connecting Threads

[WWW.FACEBOOK.COM/TWEEDRIVERCULTURE](https://www.facebook.com/TweedRiverCulture)

'Down by the River I...': A celebration of movement, water and human connection.

In November, Connecting Threads marked the end of their Dance & Water project led by artist [Rhiana Laws](#) in collaboration with photographer [Huia Takau](#), with an exhibition of Huia's photographs, and a celebratory performance by the Peebles Dance for Parkinson's group and a chance to meet those who have taken part. The team would like to thank everyone who has engaged with and supported the project, which has been an incredibly moving journey.



Photograph by Huia Takau

<https://www.facebook.com/TweedRiverCulture/>

<https://sup.org.uk/projects/connecting-threads-tweed-river-culture/>

www.tweedriverculture.org

EVENTS (FROM SUP AND OUR PARTNERS)

Consultation on South Scotland's land use journey to Net Zero and nature recovery

South of Scotland Enterprise invites local people to give their thoughts on a new framework for the South which identifies a series of land use changes to help tackle the climate & biodiversity crises.

Sign up now to an in-person or online consultation event, or provide your views online: [here](#)

The consultation dates and venues are:

Monday 11 December, Inspire Centre, Tweedbank

Tuesday 12 December, Baptist Church, Dumfries

Wednesday 17 January, Volunteer Hall, Duns

Monday 22 January, Vaults Arts Centre, Newton Stewart

Wednesday 31 January - online event

Each sessions runs from 6.30pm to 8pm.

Glencaple/Caerlaverock Walk and Talk Exploring the Coast - Wed, 13 Dec 2023 12:00 - 15:00 GMT

[Solway Coast and Marine Project](#) invites you to help shape the future of the 200 mile Solway Coast from Stranraer's Loch Ryan to Gretna. Join them for a coastal walk and workshop.

Join expert, Dr Larry Griffin, goose and swan ecologist specialising in tracking their migratory cycles and life histories, for a walk at the Caerlaverock Estate. Learn about the habitats the Estate has created to increase Climate Resilience for species on the edge which are facing coastal squeeze under sea level rise, rarities such as Tadpole Shrimps and Natterjack Toads, but also waders and wildfowl species that would lose coast roost sites and feeding areas. Larry will be joined by Morag Walker of the Solway Firth Partnership who will share her knowledge.

More info and book [here](#)

EVENTS (FROM SUP AND OUR PARTNERS)

17th March, 2024 - Save the Date: WaterOrgan Concert and Film Screening

In March Connecting Threads will be revisiting the journey of Mark Zygadlo's WaterOrgan down the Tweed as we present an evening of music and film inspired by the summer's events in Peebles, Kelso, Norham and Paxton.

Scottish Borders based composer [Greg Harradine](#) has been busy creating a new musical composition, drawing on the data collected by the WaterOrgan at its stopping points down the river. This new piece of music will be performed for the first time by a live quartet.

The evening will also include a screening of *The WaterOrgan - On The River Tweed*, a film created by Jane Somers as part of a Connecting Threads internship. The film creatively documents the WaterOrgan's journey down the river, exploring the mechanics of the artwork, its personality and the reactions it provokes.

More details to follow in the new year, in the meantime, please save the date!

Sunday 17th March, 2024

Kelso Old Parish Church

Time and tickets to be confirmed



The WaterOrgan at Paxton House, Lower Tweed



Or visit www.sup.org.uk
and click the 'donate'
button

AND FINALLY...

And finally...

Look out for **Hair Ice** (*Exidiopsis effusa*) out and about as the cold weather advances, as explained in SWSEIC's recent Record of the Week!

#RecordOfTheWeek

Hair Ice
Exidiopsis effusa

A species that is present year-round but is most obvious in winter. The fungus feeds on wood and changes the structure creating capillary like channels and holes. When it freezes water in the wood is forced through these capillary channels and holes creating the delicate hair ice. This species was found by Lee Johnson at Sorn, Mauchline.



 South West Scotland
**Environmental
Information
Centre**

Join us, it's free! Use the QR code or go to:
[SUP mailing list sign-up form \(mailchi.mp\)](http://SUP mailing list sign-up form (mailchi.mp))

SUP Membership

SCAN ME

